



PRODUCTS INFORMATION

MFZ FABRICATED FILTERS

Clean and oil-free compressed air is easily achieved with the new range of Mattei MFZ compressed air and gas filters.

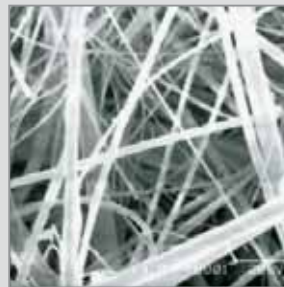
- Fabricated from high quality carbon steel providing improved filtration performance for high flow industrial applications
- Reliable & efficient liquid & particulate removal with low pressure drop
- 4 filtration grades available including 1 & 0.01 micron, activated carbon for vapor removal down to 0.003 ppm and 1 micron high temperature
- Backed by a 1 year element warranty and 10 year housing warranty

FEATURES OF MATTEI MFZ FABRICATED FILTERS

- *Externally primed and powder coated for optimum corrosion resistance; 3-part epoxy finish available as option*
- *Built in accordance with ASME VII with a U-Stamp and CRN number*
- *Hydrophobic and oleophobic borosilicate glass microfiber media repels oil and water for lower differential pressure*
- *Element o-ring seal prevents contaminant bypass for consistent performance*
- *Outer element drainage layer compatible with synthetic lubricants and prevents oil carry over*
- *Manufactured in ISO 9001 approved facility, tested in accordance with ISO 12500 and independently validated and tested*
- *High pressure & stainless steel options available to fit every application*



FEATURES



PROPRIETARY MEDIA TECHNOLOGY PROVIDES LOW PRESSURE DROP AND LONG ELEMENT LIFE



ADVANCED ELEMENT DESIGN WITH STAINLESS STEEL SUPPORT CORES AND CHEMICAL RESISTANT DRAIN LAYER

MFZ FABRICATED FILTERS

MODEL	CAPACITY ⁽¹⁾	CONNECTION SIZE	DIMENSIONS (ins)					APPROX WEIGHT	REPLACEMENT ELEMENT	QTY
			A	B	C	D	E			
MFZ 2500	2500	4"	21.0	10.8	12.4	54.7	30.0	340	RE0853(grade)-AL	3
MFZ 3000	3000	4"	21.0	10.8	12.4	54.7	30.0	340	RE0853(grade)-AL	4
MFZ 3500	3500	6"	21.0	10.8	13.9	58.7	30.0	370	RE0853(grade)-AL	4
MFZ 4000	4000	6"	23.0	12.8	16.8	61.4	30.0	410	RE0853(grade)-AL	5
MFZ 5000	5000	6"	24.3	14.0	17.4	62.0	30.0	460	RE0853(grade)-AL	6
MFZ 6000	6000	6"	24.3	14.0	17.4	62.0	30.0	460	RE0853(grade)-AL	7
MFZ 7500	7500	8"	28.3	18.0	19.9	69.4	30.0	560	RE0853(grade)-AL	9
MFZ 8500	8500	8"	28.3	18.0	19.9	69.4	30.0	560	RE0853(grade)-AL	10
MFZ 10000	10000	10"	28.3	18.0	17.8	70.1	30.0	640	RE0853(grade)-AL	12

SPECIFICATIONS

Design Operating Pressure Range	0 to 150 psig
Condensate Drain (Included)	Automatic Float
ASME VIII & U-Stamp	Standard
Canadian Registration Number	Standard

ELEMENT PERFORMANCE	M1	M1 HT	M01	AC
Maximum Particle Size (ISO Class) ⁽²⁾	2	2	1	-
Maximum Oil Content (ISO Class) ⁽²⁾	2	2	1	1
Particle Removal (microns)	1	1	0.01	-
Maximum Oil Carry Over at 68°F (ppm or mg/m ³)	0.1	0.1	0.01	0.003
Recommended Operating Temperature Range	35 to 212°F	35 to 450°F	35 to 212°F	35 to 77°F
Design Operating Temperature Range	35 to 248°F	35 to 450°F	35 to 248°F	35 to 122°F

CORRECTION FACTOR

psig	60	70	85	100	115	145
Correction Factor	0.76	0.84	0.92	1.00	1.07	1.19

(1) At 100 psig. For all other pressures, refer to the pressure correction factors above. (2) Per ISO 8573.0:2010 (3) For coalescing, inlet is at bottom, outlet at top. For particulate, inlet is at top, outlet at bottom. (4) Install with air flow from inside to outside for coalescing filtration and from outside to inside for dry particulate filtration. (5) Differential pressure gauge indicators and external float drains are fitted to all models (except AC grade elements and high temperature applications). (6) Technical specifications subject to change without notice. Direct inquiries to info@matteicomp.com.



MFZ 2500 - 10000



Mattei Compressors, Inc.
 9635 Liberty Road, Suite E
 Randallstown, MD 21133 USA
 Sales: (410) 521-7020
 www.matteicomp.com
 E-mail: info@matteicomp.com

www.matteicomp.com